

The Asia-Pacific Conference on Plasma Physics 2026 (AAPPS-DPP 2026)

Proposal for Busan, South Korea





CONTENTS

01 VENUE

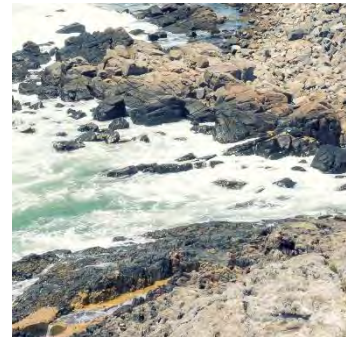
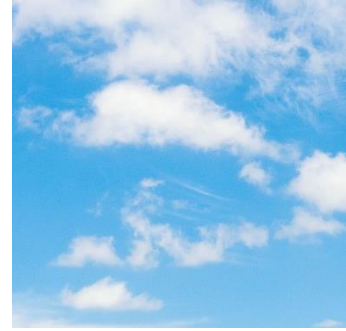
02 INFRASTRUCTURE

03 SUPPORT

01

V E N U E

Busan and BPEX





BUSAN IS



National Geographic's **Best of the World: seven cultural highlights**

2. Busan, South Korea

From craft breweries to Asia's top film festival, South Korea's second largest city is fuelling a cultural boom

Cinema is a communal experience in Busan, Korea's second largest city, which has hosted one of Asia's most prestigious annual film festivals for nearly three decades. In 2022 the Busan International Film Festival held screenings in 14 neighbourhood venues across this seaport of 3.4 million people.

Before performances, movie lovers can grab a craft beer or coffee — Busan is celebrated for its artisan brewers of both beans and hops — or stroll through Citizens Park, a redeveloped US military base (the city played a strategic role in the Korean War). Opened in 2014, the park is a 133-acre retreat in the middle of downtown, planted with more than one million trees and shrubs, comprising 97 species in all.



AirBnB's

Top 10 Cities for Solo Travelers

10. Busan, South Korea

Solo travel booking in **Busan**, about a two-and-a-half-hour train ride south from Seoul, increased 103 percent on Airbnb compared to 2016. The **laid-back coastal city** offers both urban sprawl and plenty of beaches (like Gwangalli or Haeundae, our favorites). Even if you're not a baseball fan, snag a ticket to a game at Sajik Stadium.



BUSA N IS

lonely planet

Lonely Planet's

Best Travel Destination in Asia

“

Home to majestic mountains, glistening beaches, steaming hot springs and fantastic seafood, South Korea's second-largest city is a rollicking port town with tons to offer!

”




BPEX

Exhibition and Convention Center in Busan Port



20
Conference
Rooms



11,007m²
Exhibition Floor
Space

Original Downtown

Busan's Old Downtown Area

- ✓ BPEX and hotels within walking distance from Busan station
- ✓ At the heart of Busan's North Port Redevelopment
- ✓ 5,272 Rooms in hotels, hostels etc



BPEX

Layout & capacities



Introduction of BPEX

Key Facilities	Conference Halls (A,B,C,D,E,F)	- 1,657.38m ² - Can combine up to 6 rooms - Occupancy : (Theater) 1,840 people, (Classroom) 920 people, (Banquet) 920 people
	Event Halls (A,B,C,D)	- 1,710m ² - Can combine up to 4 rooms - Occupancy : (Theater) 2,030 people, (Classroom) 1,000 people, (Banquet) 1,000 people
	Meeting Rooms (1,2,3,4,5,6,7,8,9,10)	- 731m ² - Combination : 1+2/3+4/6+7/8+9 - Occupancy per room : (Theater) 70 people, (Classroom) 14-42 people
Other Facilities	Simultaneous Interpretation Booth, Subsidiary Facilities, Sky Garden, Terrace, and more.	

Floor Guide

By Floor	Purpose
5th Floor	Busan Port International Exhibition & Convention Center
4th Floor	Office, Machine Rooms
3rd Floor	Departure Terminal, Convenience Facilities
2nd Floor	Arrival Terminal, Convenience Facilities
1st Floor	Parking Lot

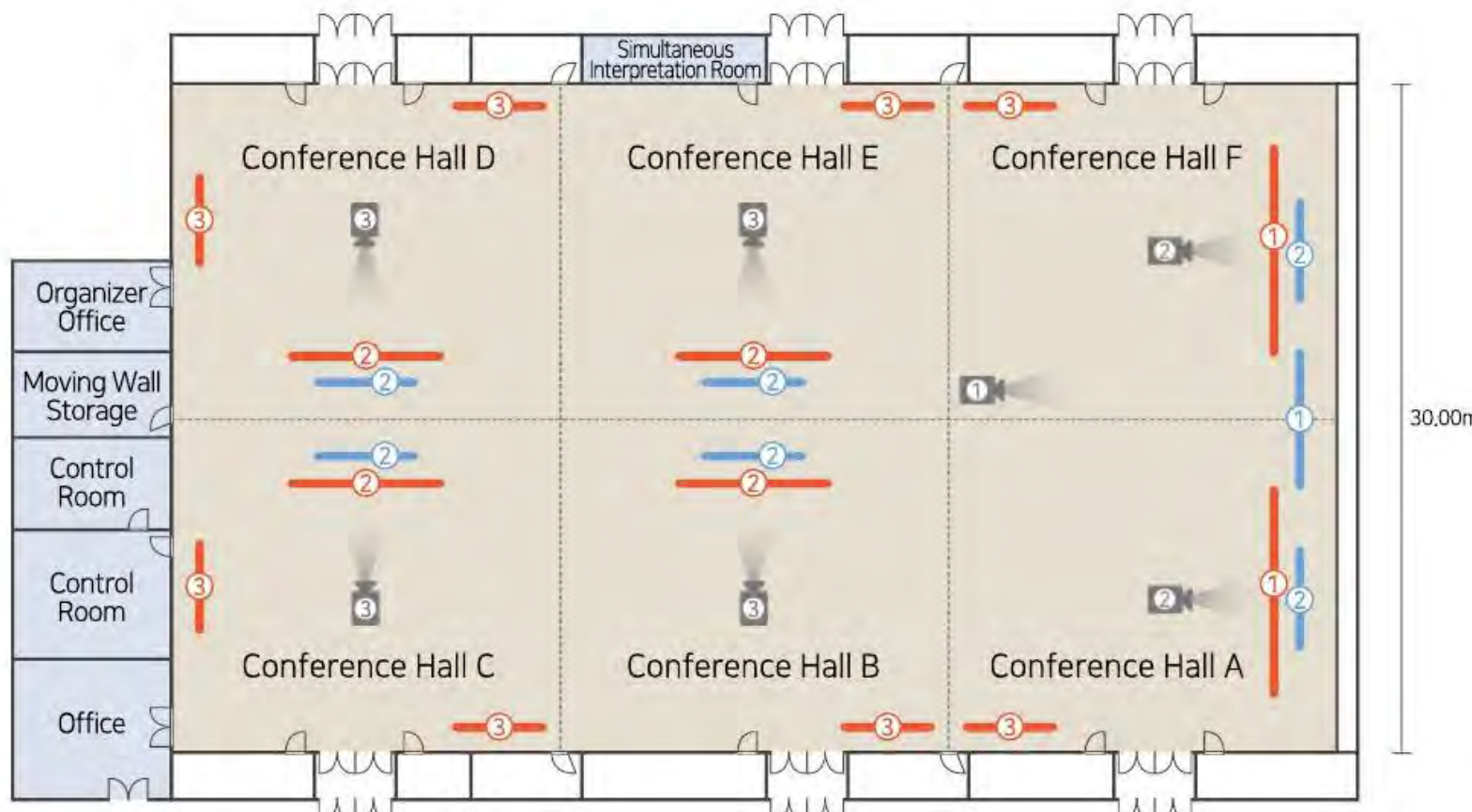
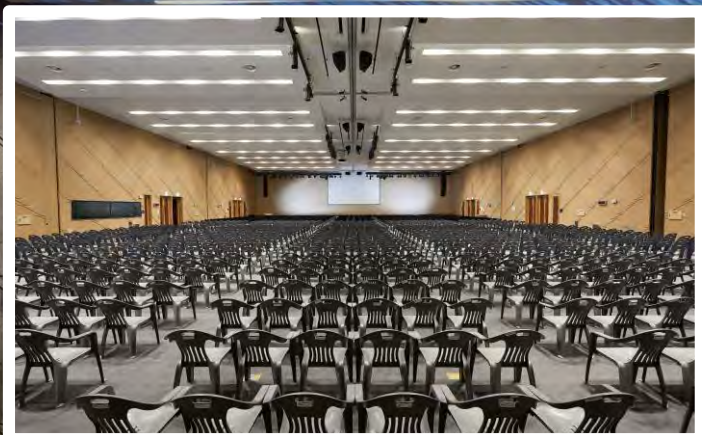
- English : BPEX(Busan Port International Exhibition & Convention Center)
- Location : 5th floor(Choryang-dong, Busan Port International Passenger Terminal), 206, Chungjang-daero, Dong-gu, Busan, 48751, Republic of Korea
- Area : 11,007.64m² (excluding stairs, equipment rooms, and other public spaces)
- Managed by : Busan Port Facilities Management Center





BPEX

Conference Hall

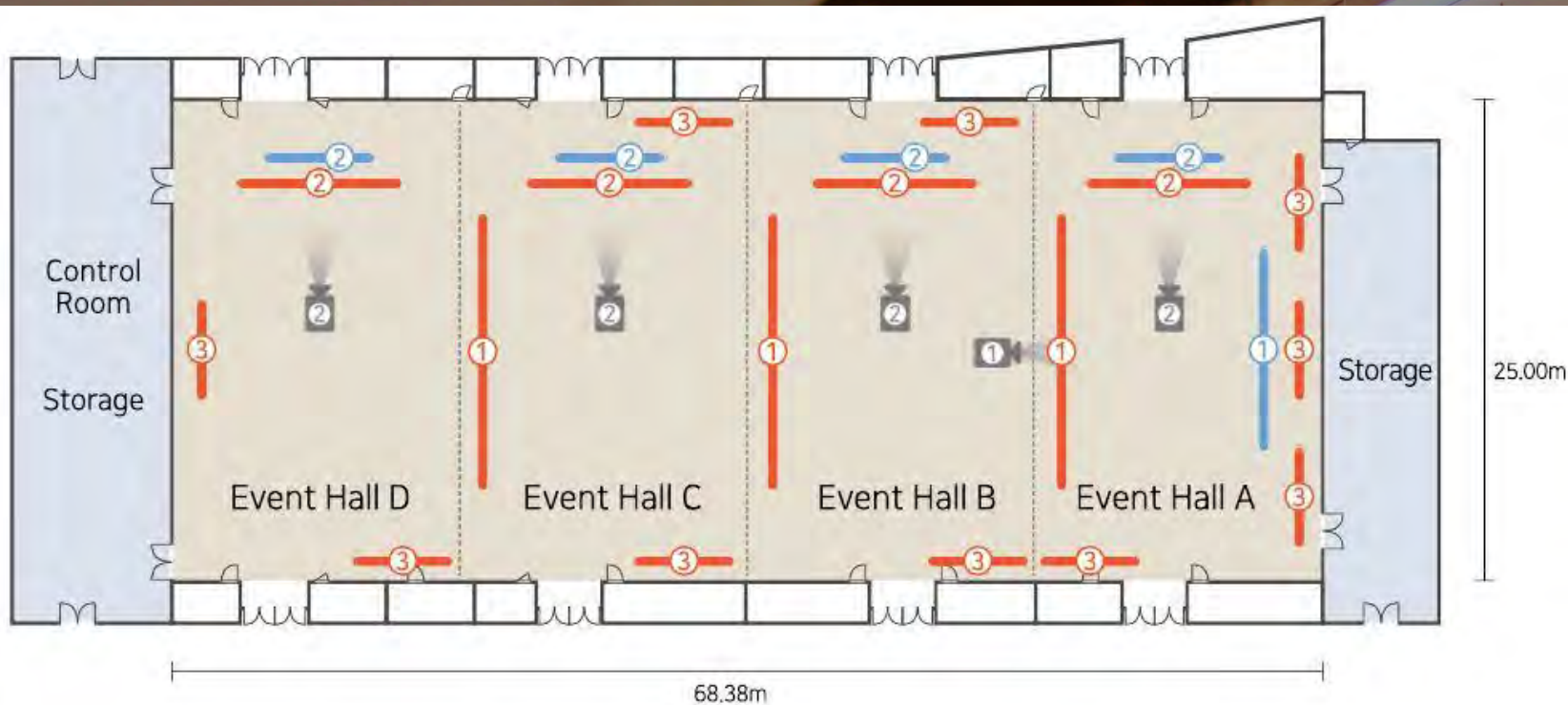


- Screen ① 400inch ② 300inch
- Banner ① 12m ② 10m ③ 6m
- Beam Projector ① 18,000ANSI Laser ② 7,000ANSI Laser ③ 7,500ANSI Lamp type



BPEX

Event Hall



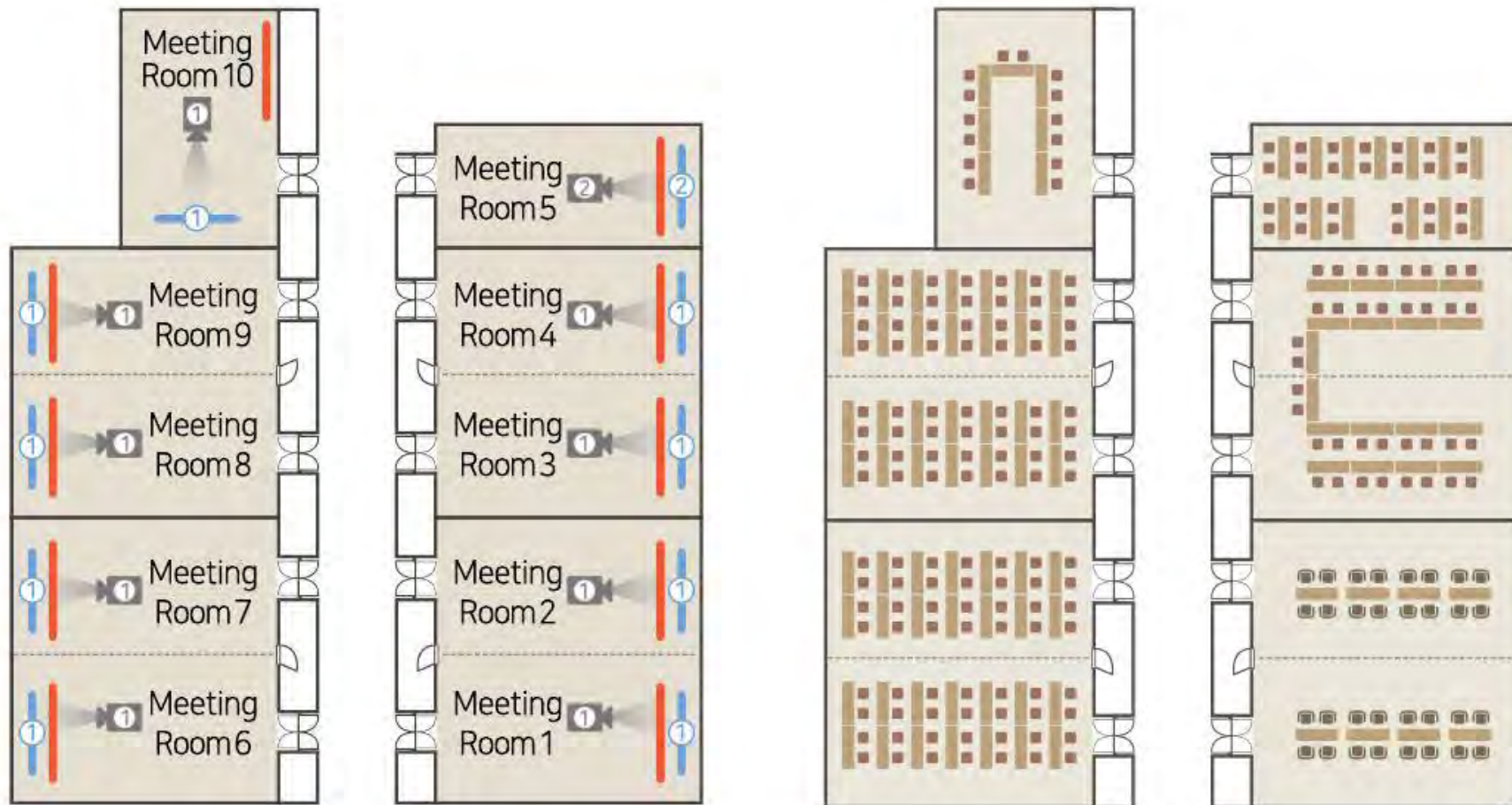
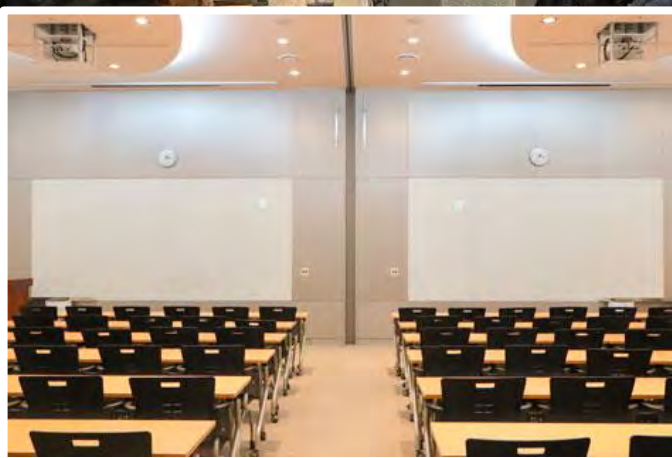
- Screen ① 400inch ② 300inch
- Banner ① 10m ② 8m ③ 6m
- Beam Projector ① 15,000ANSI DLP type ② 7,500ANSI Lamp type





BPEX

Meeting Rooms



- Screen ① 250inch ② 150inch
- Beam Projector ① 7,200ANSI Lamp type ② 6,200ANSI Lamp type

- Banner 4m
- ※ Banner for two rooms integration
Width : 4m50cm~8m, Height : 80cm(Recommended)

iFPC & OS 2023 at the BPEX

The 2nd International Fusion and Plasma Conference

&

The 13th International Conference on Open Magnetic Systems
for Plasma Confinement

Date : August 21st – 25th, 2023

Participants : 413

160 Posters during the Poster Session

15 Plenary Sessions

36 Breakout Sessions

Time / Date	August 22 (Tuesday)					
09:00-10:20	<p>[Plenary Session 4] "ORNL's Role in Enabling an Aggressive US Fusion Energy Program" Dr. Mickey WADE (ORNL, USA) *Session Chair : Dr. Si-Woo YOON (KFE, Korea)</p>					
	<p>[Plenary Session 5] "Leadership in the Era of the 4th Industrial Revolution!" Dr. ChuJoo HWANG (Jusung Engineering, Korea) *Session Chair : Prof. Chi Kyu CHOI (Jeju Nat'l Univ., Korea)</p>					
10:20-10:40	Coffee Break					
	Room A (Conference Hall C)	Room B (Conference Hall D)	Room C (Meeting Room 3+4)	Room D (Meeting Room 6+7)	Room E (Meeting Room 8+9)	Room F (Event Hall A)
10:40-12:00	<p>[Tu1A] 3D Physics *Session Chair : Prof. Jong-Kyu PARK (Seoul Nat'l Univ., Korea)</p>	<p>[Tu1B] Plasma Material *Session Chair : Prof. Sooseok CHOI (Jeju Nat'l Univ., Korea)</p>	<p>[Tu1C] ITER Technology (2) *Session Chair : Dr. Munseong CHUON (KFE, Korea)</p>	<p>[Tu1D] Low Temperature Plasma Application *Session Chair : Dr. Jin Seok KIM (Tokyo Electron, Japan)</p>	<p>[Tu1E] Advanced Accelerators *Session Chair : Prof. Seong Hee PARK (Korea Univ. Sejong Campus, Korea)</p>	<p>[Tu1F] Divertor/Material in OS *Session Chair : Prof. Mizuki SAKAMOTO (Univ. of Tsukuba, Japan)</p>
12:00-13:30	Lunch Time					
13:30-14:50	<p>[Plenary Session 6] "Laser Fusion and Laser Plasma Physics" Prof. Kunioki MIMA (Osaka Univ., Japan) *Session Chair : Prof. Hong Jin KONG (KAIST, Korea)</p>					
	<p>[Plenary Session 7] "Initial Commissioning of the RAON Superconducting Linac and its Future Perspective" Dr. Dong-O JEON (IBS, Korea) *Session Chair : Prof. Hyyong SUK (GIST, Korea)</p>					
14:50-15:05	Break					
	Room A (Conference Hall C)	Room B (Conference Hall D)	Room C (Meeting Room 3+4)	Room D (Meeting Room 6+7)	Room E (Meeting Room 8+9)	Room F (Event Hall A)
15:05-16:25	<p>[Tu2A] Scenario & Modeling (1) *Session Chair : Dr. Wonha KO (KFE, Korea)</p>	<p>[Tu2B] Plasma Hydrogen Production *Session Chair : Dr. Daehoon LEE (KIMM, Korea)</p>	<p>[Tu2C] Heating and Current Drive System *Session Chair : Dr. Sonjong WANG (KFE, Korea)</p>	<p>[Tu2D] Modeling and Simulation *Session Chair : Prof. Yangyang FU (Tsinghua Univ., China)</p>	<p>[Tu2E] Laser Fusion *Session Chair : Prof. Byoung-ick CHO (GIST, Korea)</p>	<p>[Tu2F] Plasma Rotation and Flow *Session Chair : Prof. Cary FOREST (Univ. of Wisconsin- Madison, USA)</p>
16:25-16:40	Break					
16:40-18:00	Poster Session 2					

Layout of BPEX for iFPC&OS2023 at BPEX

Floor Plan BPEX 5F



사용	위치	세팅
Registration Desk	컨퍼런스홀 앞 로비	
Plenary Session	컨퍼런스홀 A+B+E+F	교실식 400명
Room A	컨퍼런스홀 C	교실식 150명
Room B	컨퍼런스홀 D	교실식 150명
Room C	회의실 3+4	교실식 75명
Room D	회의실 6+7	교실식 75명
Room E	회의실 8+9	교실식 75명
Room F	이벤트홀 A	교실식 150명
Poster Session & Exhibition	컨퍼런스홀 뒤 로비 & 회의실 사이	
사무국	회의실 5	ㄷ자형 10명
VIP룸	회의실 1	ㄷ자형 12명
Banquet	이벤트홀 B+C	연회식 350명

~ 400 participants
5 parallel sessions

Images from iFPC&OS2023 at BPEX



Plenary Session



Parallel Session

Images from iFPC&OS2023 at BPEX



Poster Session



Exhibition

Images from iFPC&OS2023 at BPEX



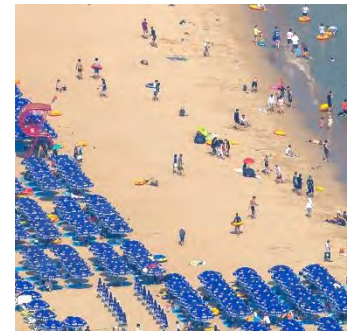
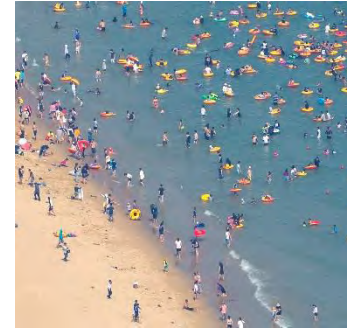
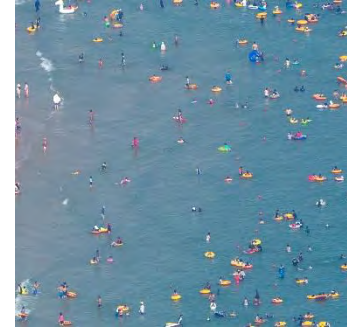
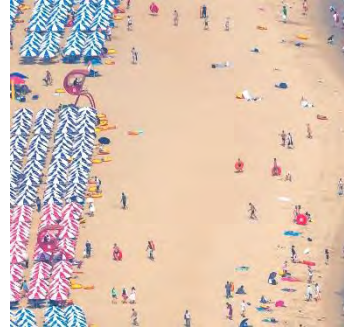
Banquet



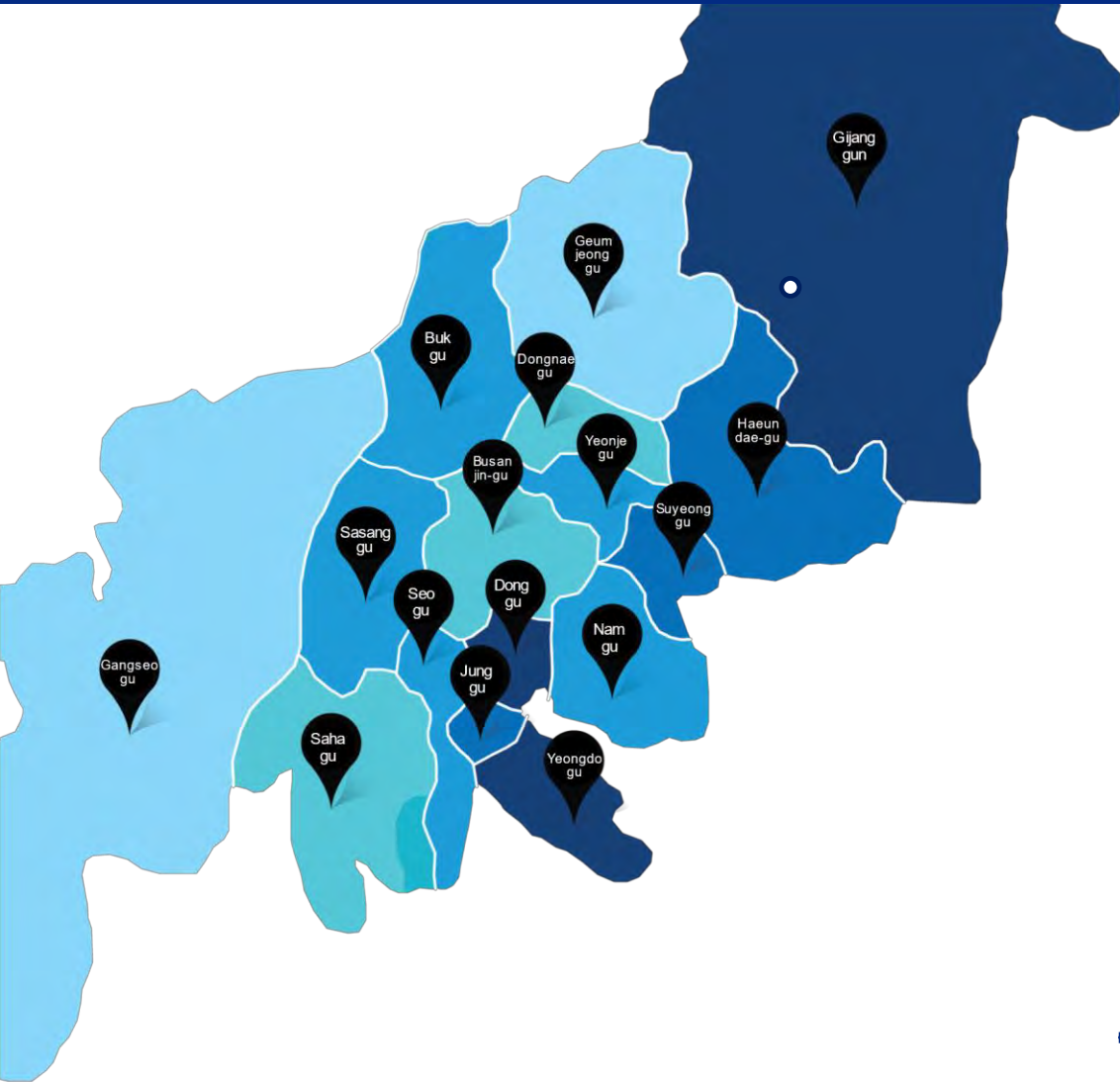
Tour

02

INFRASTRUCTURE



02 INFRASTRUCTURE



★★★
60,000-100,000



★★★★
100,000-150,000



★★★★★
150,000-400,000

(KRW) per night

**From Hotels to Hostels and Air B&Bs,
Busan has **over 60,000 rooms****



Luxury Hotels

★★★★~★



Lotte Hotel Busan



Commodore Hotel Busan

Rooms

650 Rooms

311 Rooms

Ballroom Capacity

Max Capacity
2,000

Max Capacity
300

Features

One of Korea's finest hotel chains, it is well-known for luxurious amenities and services

A classic hotel that opened in the 1970s, it is famous for its uniquely Korean exterior/interior and prime location



Business Hotels



Business hotels



Asti Hotel Busan

312 rooms



Toyoko Inn Busan Station 1

359 rooms



Toyoko Inn Busan Station 2

491 rooms



Ramada Encore Busan Station

446 rooms



Crown Harbor Hotel

500 rooms



Tower Hill Hotel

116 rooms



La Valse Hotel

389 rooms



Hotel Adela

340 rooms

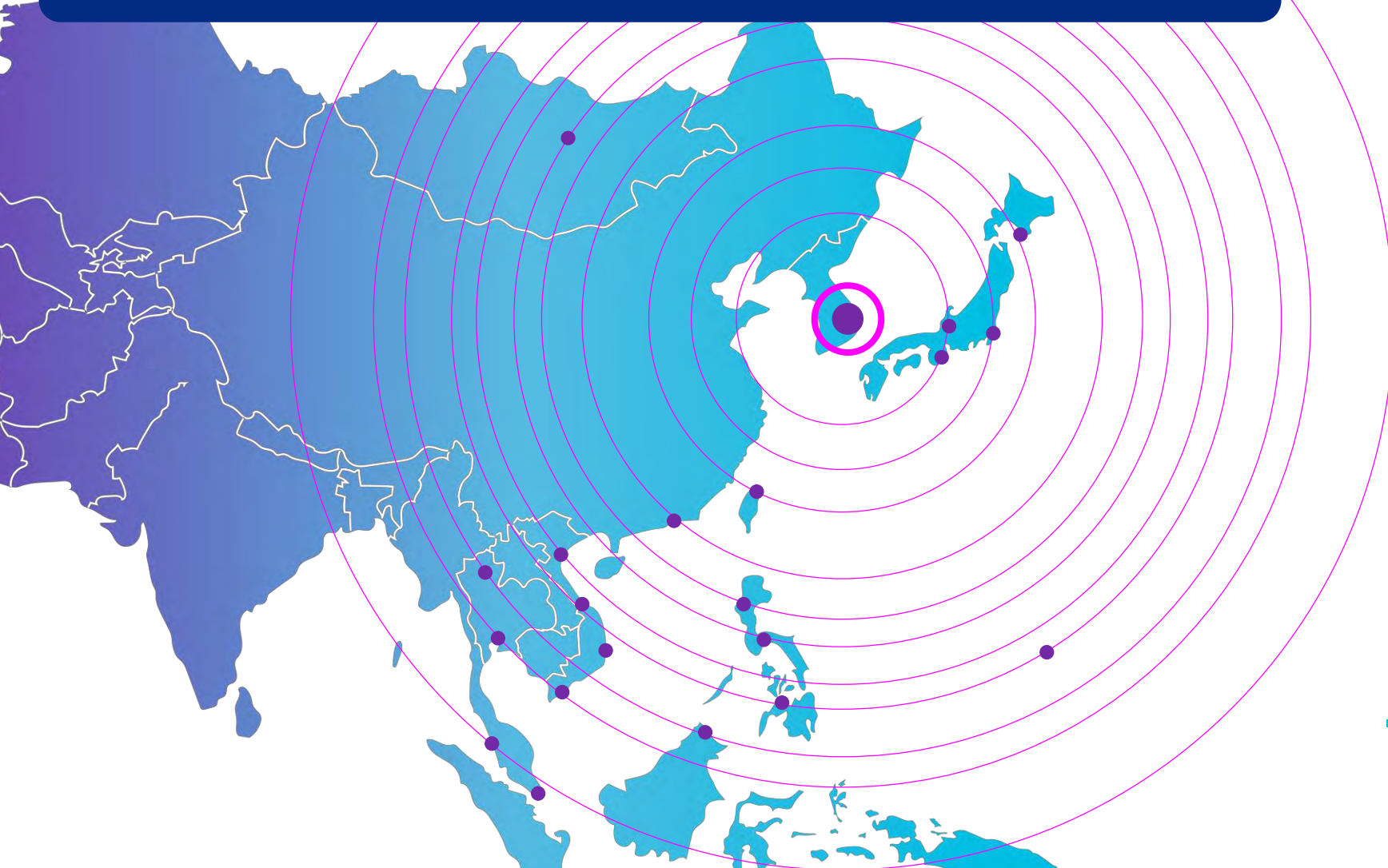


Fairfield by Marriott Busan Songdo

179 rooms

02 INFRASTRUCTURE

Gimhae International Airport is Connected to the World

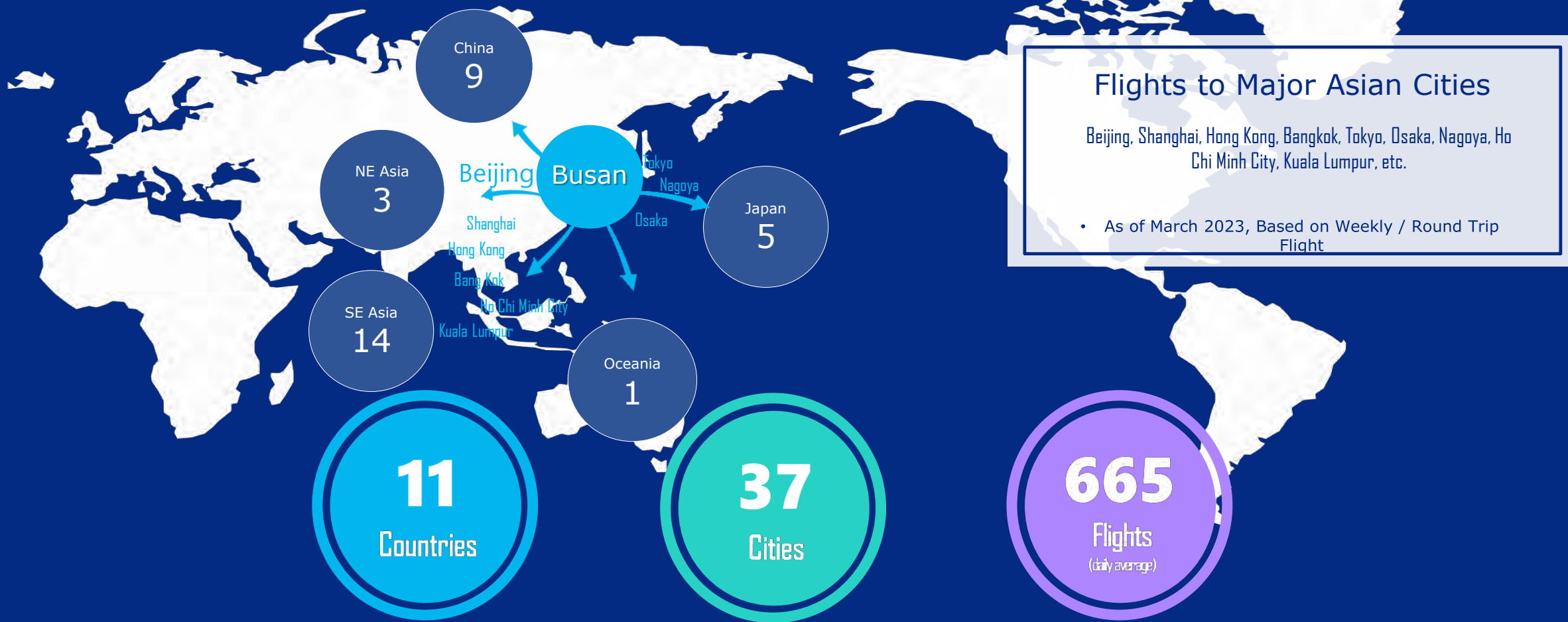


[11 Nations | 37 Cities]



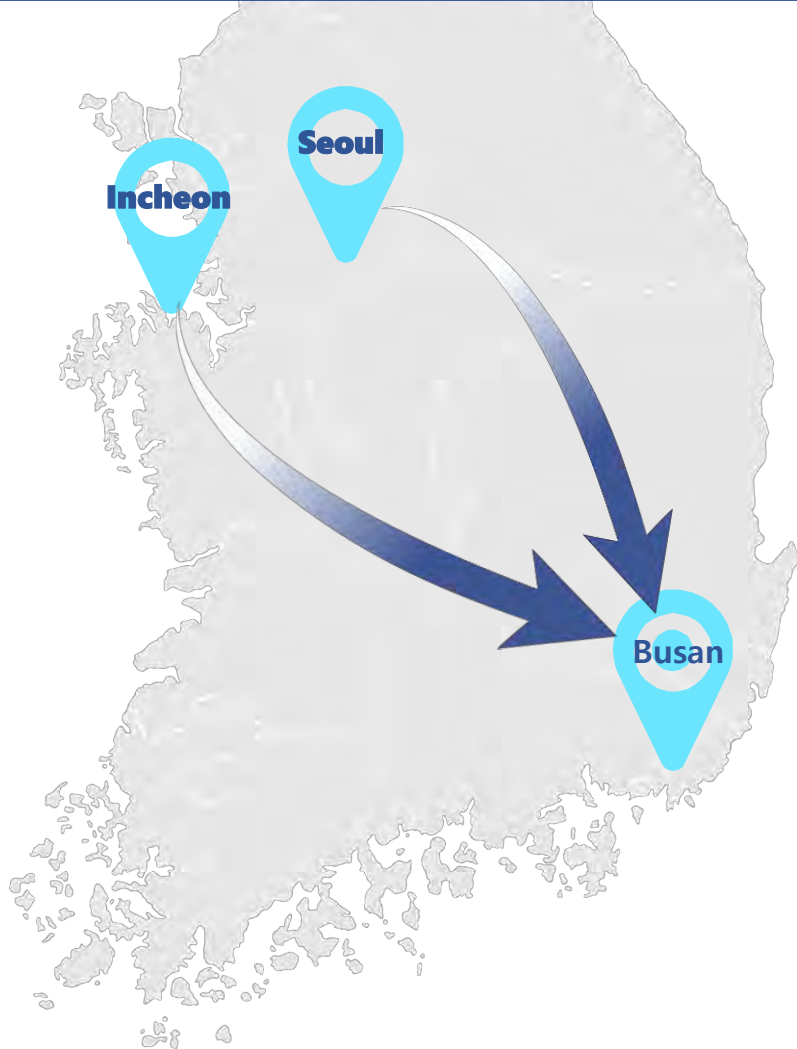
Busan's International Accessibility

Direct Flights to Gimhae International Airport
Direct fast Ferries to Fukuoka



02 INFRASTRUCTURE

Plenty of transit options from Seoul



By Air

Gimpo-Gimhae

50 min

84 flights / day



Domestic Transfer Flights

Incheon-Gimhae

50 min

8 flights / day

NEW



KTX

Incheon-Busan

2 hours 30 min

Planned for 2025



KTX

서울-부산

2 hours 30 min

65 trains / day



SRT

수서-부산

2 hours 20 min

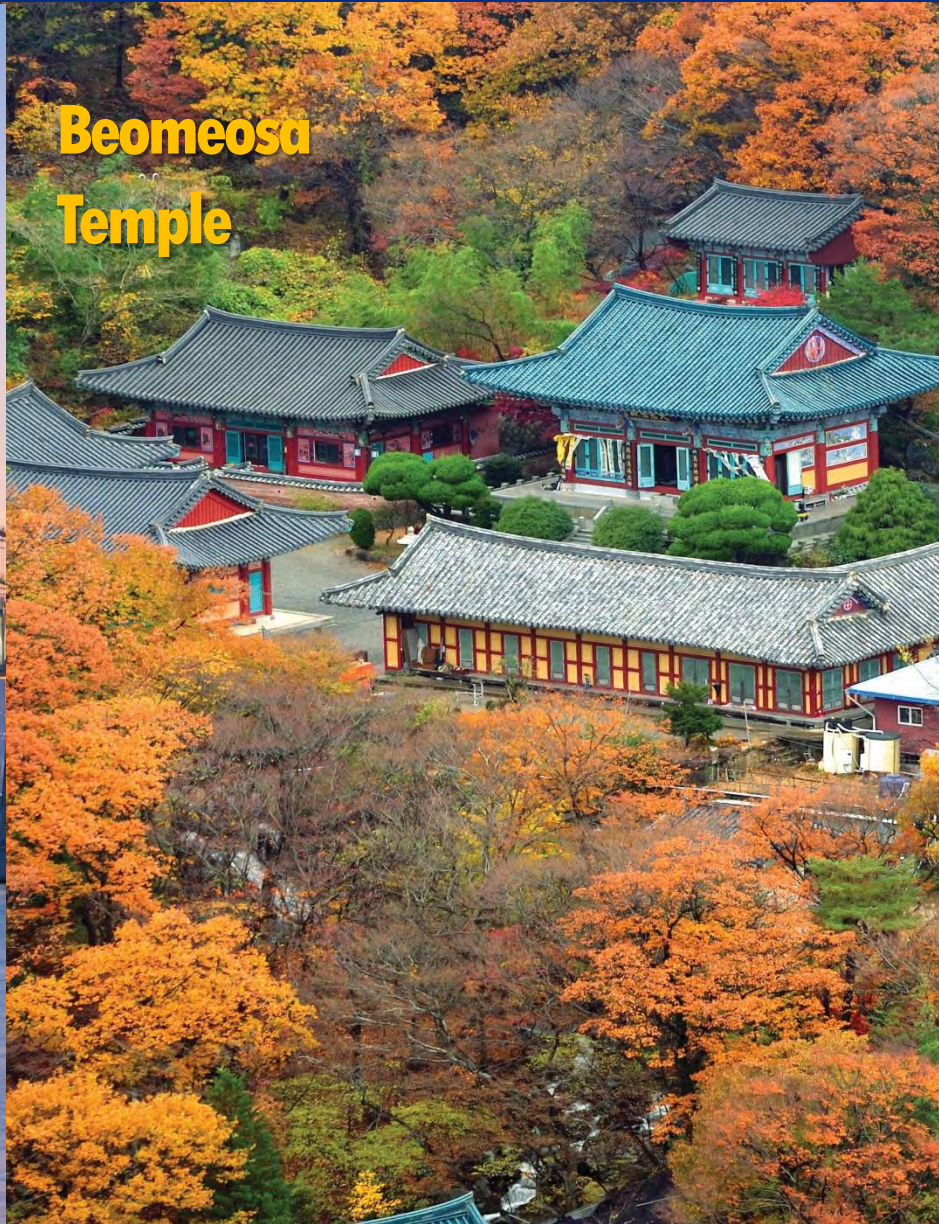
40회 운행 / 1일

02 INFRASTRUCTURE – Culture and Tourism

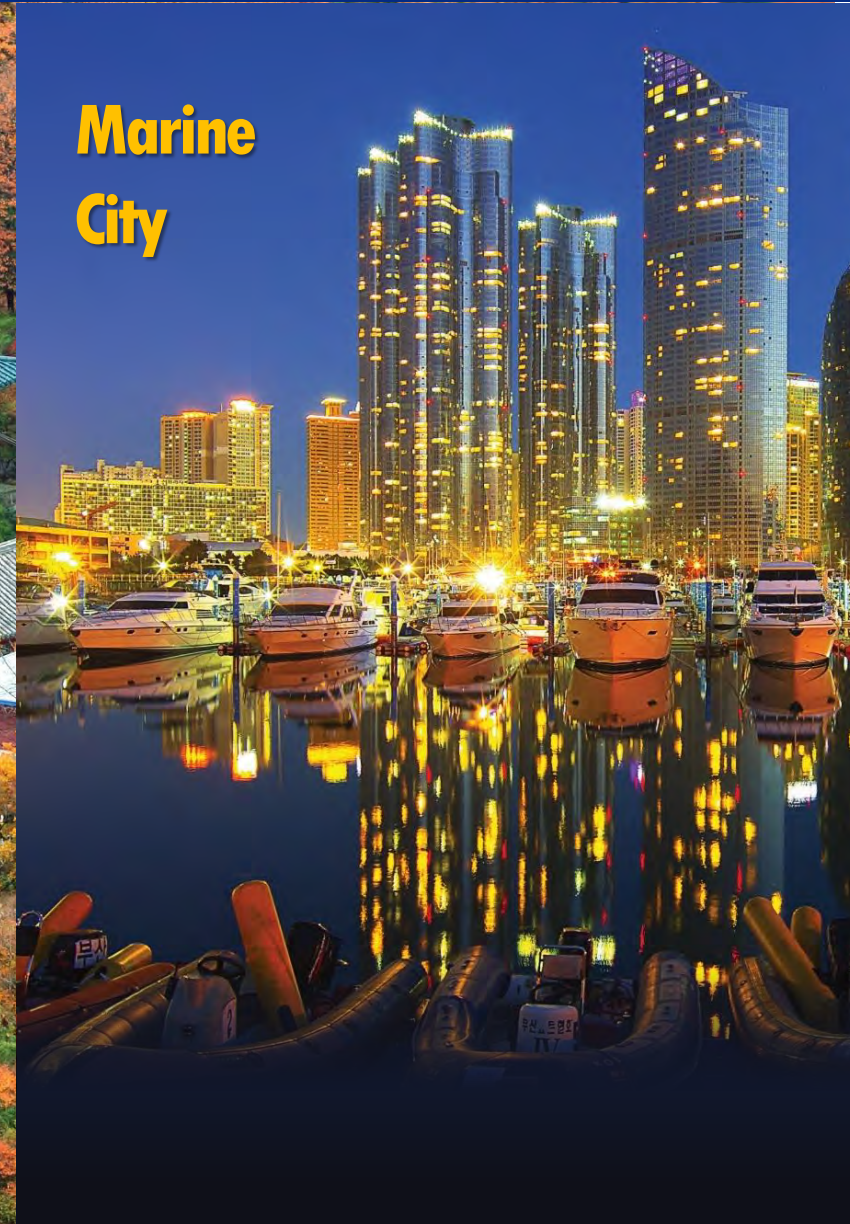
Gwangandaegyo
Bridge



Beomeosa
Temple



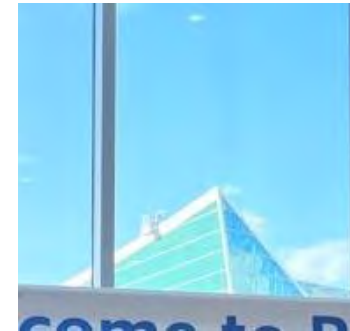
Marine
City



03

SUPPORT

ONE-STOP SUPPORT



Support for Hosting International Conferences

Tourism Programs for Attendees

1

Tour Bus/ Tour Translator and Guide



2

Portable Tourism Information Center
MICE Coordinator as Tour Guide



3

Utilization of Virtual Tourism and MICE Platform

4

Busan MICE Kit Coupon Book for Foreign Visitors



Thank you for your attention.

Hoping to see you in BUSAN !

